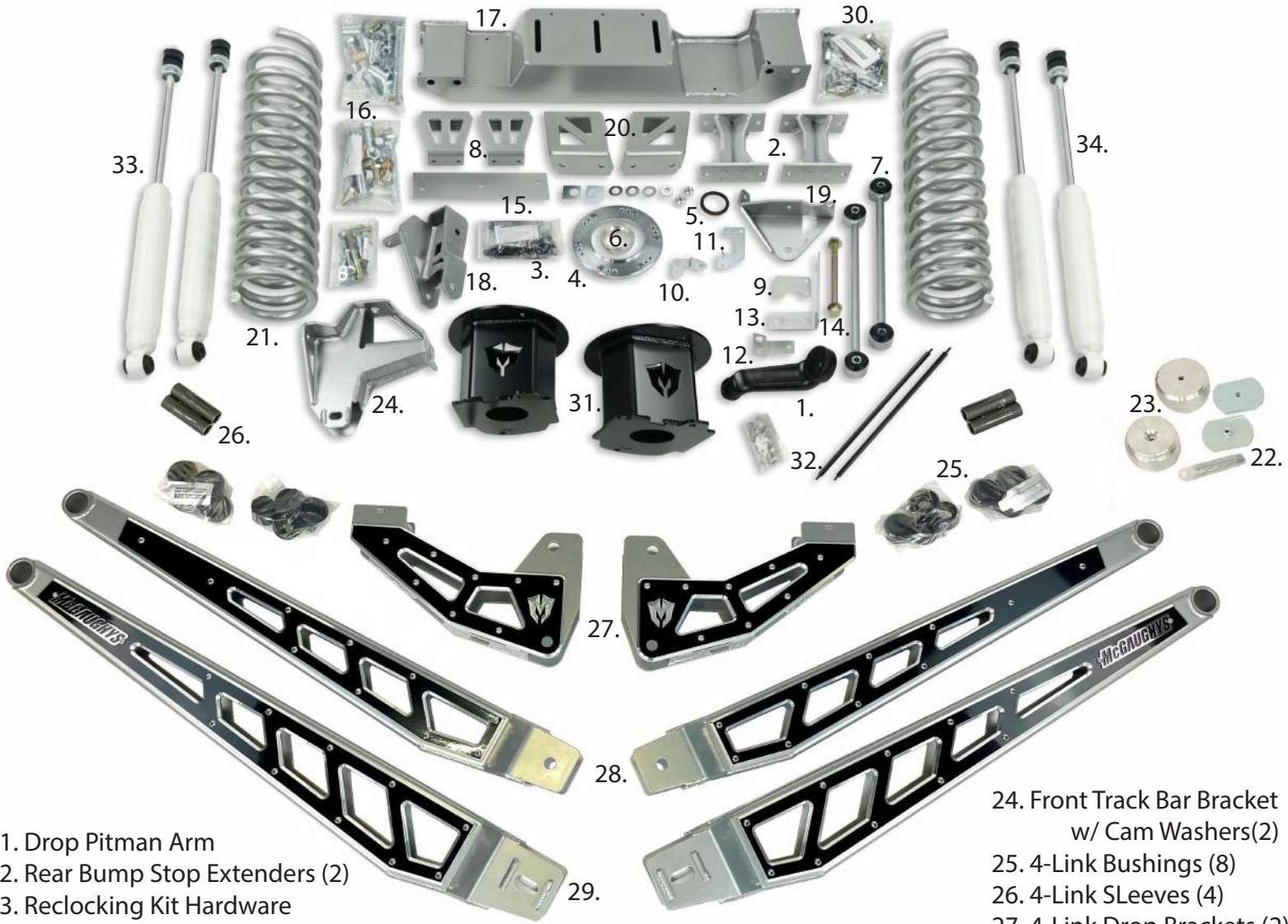




**McGAUGHY'S**  
S U S P E N S I O N P A R T S

559-226-8196  
4603 E. VINE AVE.  
FRESNO, CA 93725  
www.mcgauighys.com

**2019+ DODGE RAM 2500 8" LIFT KIT  
PART# 54430 (AIR REAR) w/ 4-LINK**



- 1. Drop Pitman Arm
- 2. Rear Bump Stop Extenders (2)
- 3. Reclocking Kit Hardware
- 4. Transmission Reclocking Ring
- 5. Transmission Output Shaft Seal
- 6. Transmission Output Shaft Seal Extension
- 7. Rear Sway Bar End Links (2)  
w/ Bushings & Sleeves
- 8. Front Bump Stop Extenders (2)
- 9. Rear Brake Line Bracket (2014-2018)
- 10. Front Brake Line Bracket (Driver Side)
- 11. Front Brake Line Bracket (Pass. Side)
- 12. Rear Brake Line Bracket (2019-2024)
- 13. Wire Loom Relocation Bracket
- 14. Transmission Bolt

- 15. Transmission Shim
- 16. Hardware Packs (3)
- 17. Transmission Crossmember
- 18. Rear Track Bar Bracket  
w/ Spacer Washer
- 19. Rear Track Bar Bracket Brace
- 20. Front Sway Bar Drop Brackets (2)
- 21. Front Coil Springs (2)
- 22. Front Coil Retainer Nut Brackets (2)  
w/ Hardware
- 23. Front Coil Retainer Billet Pucks (2)

- 24. Front Track Bar Bracket  
w/ Cam Washers(2)
- 25. 4-Link Bushings (8)
- 26. 4-Link SLeeves (4)
- 27. 4-Link Drop Brackets (2)  
w/ Billet Face Plates
- 28. Upper 4-Link Bars (2)  
w/ Billet Face Plates
- 29. Lower 4-Link Bars (2)  
w/ Billet Face Plates
- 30. 4-Link Hardware
- 31. Rear Air Bag Spacers (2)
- 32. Rear Air Bag Rod  
Extenders (2)
- 33. Front Shocks (2)
- 34. Rear Shocks (2)



**McGAUGHYS**  
S U S P E N S I O N P A R T S

559-226-8196  
4603 E. VINE AVE.  
FRESNO, CA 93725  
[www.mcgaughys.com](http://www.mcgaughys.com)

**READ THESE ENTIRE INSTRUCTIONS  
BEFORE STARTING ANYTHING**

- If you are the installer only, and not the owner of the vehicle, please make sure the owner of the vehicle gets these instructions. They contain very important information about the lift kit, maintenance, and warranty.
- Before moving forward with installation, please layout all parts from boxes and ensure everything is present. If any parts are missing, please contact McGaughy's Suspension immediately at 559-226-8196.
- If you alter the finish of any of the provided components, like zinc plating, chroming, or powder-coating, which can cause damage to the strength and structure of the metal, any warranties will be null and void.
- If any components are ground on or modified in any way, then no returns or exchanges will be accepted and any warranties will be null and void.
- NO welding is required to install any part of this lift kit. Do not weld any components.
- Over-sized tires and heavier wheels can cause premature wear on factory and aftermarket components like ball joints, bushings, tie-rod ends, wheel bearings, idler arms, drive-lines, etc.... You may need to replace / install new components sooner than factory recommendations based on the tires and wheels you choose. Please note that the heavier and wider wheels and tires combined with aggressive driving (off-road and on highways) will cause more wear on ALL moving parts, factory and aftermarket. Especially when vehicle is in 4wd or Auto-4wd / AWD modes.



**McGAUGHY'S**  
S U S P E N S I O N P A R T S

559-226-8196

4603 E. VINE AVE.

FRESNO, CA 93725

[www.mcgaughys.com](http://www.mcgaughys.com)

## WARRANTY INFORMATION

-McGaughy's warrants all **McGaughy's** products against manufacturer's defects in materials or workmanship for a period of **ONE-YEAR** from the date of original purchase. All McGaughy's spindles carry a **LIFETIME** warranty against manufacturer's defects.

-Warranty will not extend to any product or part there in, that has been improperly installed, abused, or neglected

-McGaughy's will not warranty any product(s) that were modified in any way. Check fit all products prior to custom painting, powder-coating, or any form of fabrication (sanding, drilling, painting, chroming, etc).

-There are **NO WARRANTIES** neither expressed nor implied for powder-coating on any McGaughy's products.

-McGaughy's is not responsible for damages and/or warranty of other vehicle parts (factory or aftermarket) related or non-related to the install of McGaughy's component(s).

-Warranty is limited to the repair or replacement (of McGaughy's product only), at McGaughy's discretion. And only after inspection of the defective part, once returned to McGaughy's with proof of purchase, date of purchase, and all shipping costs prepaid.

-Any cost of labor, freight, incidental or consequential damages are expressly excluded from warranty.

## FRONT INSTALLATION

Before starting this installation, we recommend loosening the factory front shocks with the truck on the ground. Once the vehicle is in the air, it is extremely difficult to access the upper shock nuts and they have a significant amount of tension on them. Loosen the top nut using a 21mm wrench, but DO NOT remove it all the way off since it holds up the front suspension. (pic 1) Always use the proper tools and consult the factory service manual for torque values and procedures. With the vehicle turned off and the parking brake set, secure the rear wheels/tires with wheel chocks. Use a jack and lift the front of the vehicle. Place jack stands under the frame on both side of the vehicle. Remove the front wheels.



1. Using a 13mm wrench, unbolt the brake line brackets from the frame on both sides. (pic 2) Be sure to unbolt the brake line bracket from the axle for extra maneuverability.

2. Support the front drive line and remove the four front drive shaft flange bolts using a 15mm socket. (pic 3)



3. Remove the driver side drag link to pitman arm nut using a 21mm socket. Use a tie-rod removal tool to avoid damaging the factory tie-rod ends. (pic 4)

4. Remove the pitman arm to steering box nut using a 46mm socket. (pic 4)

5. Using a pitman arm puller, remove the pitman arm from the steering box output shaft. (pic 6)



6. Remove the sway bar end link top nut on both sides using a 18mm socket. Separate the sway bar from the end links. (pic 7)

7. Remove the sway bar mount from the frame on both sides using a 15mm socket. (pic 8)

8. Remove the track bar using a 27mm socket.

9. Support the front axle and remove the front shock top nuts.

10. Remove the front shock lower mounting bolts using a 21mm socket. Remove the shocks from the vehicle. (pic 9)



**11.** Slowly lower the front axle until the front coil spring tension is released.

**12.** Remove the factory front coil springs. (pic 10)

**13.** Unbolt the factory front track bar mount using a 21mm socket. (pic 11-12)



**14.** Remove the factory radius arms. Use a 27mm socket on the upper arm to axle bolts and a 24mm socket on the lower arm to axle bolts. Use a 27mm socket on the arm to frame bolts. (pic 13)

**15.** Use a cut-off wheel to remove the front bump stop mounts on both sides of the frame. The mounts will be reused, so do not destroy them. Cut the factory weld only. (pic 14)

**16.** Clean the remaining weld material from the frame using an abrasive disc or flap wheel. Be sure to paint the bare metal. (pic 15)



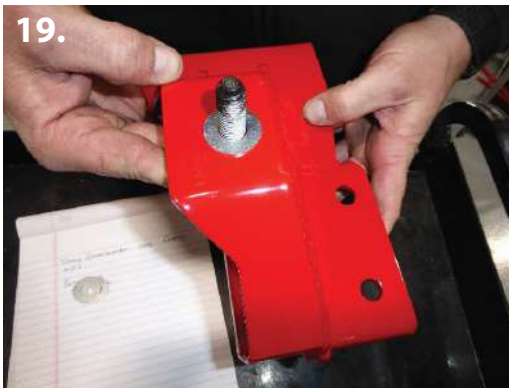
**17.** Use the provided tap on the existing holes that were located under the factory bump stop mount on the frame. (pic 16)

**18.** Clean the remaining weld material from the factory bump stop cup that was removed from the frame using an abrasive disc or flap wheel. Be sure to paint the bare metal.

**19.** Install the factory bump stop cups onto the new bump stop drop brackets using the provided 3/8" allen bolts.

**20.** Install the original bump stops back into the cups by pressing them in. This will take some force. (pic 17)

**21.** Now install the bump stop brackets using the provided 7/16" x 3/4" bolts into the holes you tapped. (pic 18)



**22.** Install the new track bar drop bracket using the original hardware. Place the 3 provided laser cut 16g washers on top of the new bracket over the original bolts before installing into the original location. (pic 19-20)

**23.** Use the last two original bolts on the side of the frame going into the new drop bracket. Use the provided 14mm lock nuts. (pic 21)

**24.** Now tighten all five bolts on the new track bar drop bracket in order of installing. First being the single bolt on the back side in pic #19. Then the two bolts on the front in pic #20. And last the two on the side of the frame in pic #21. Torque all to factory specs.



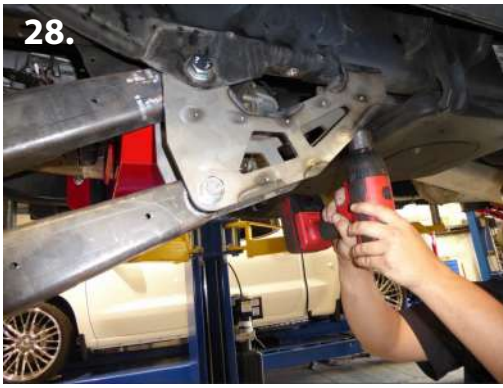
**25.** Install the supplied bushins and sleeves into the new upper and lower 4-link arms. (pic 22-23)

**26.** Install the upper 4-link arm into the upper mount on the axle, using the factory hardware. (pic 24)



**27.** While holding the upper arm in place, install the 4-link drop down bracket using the provided hardware. (pic 25)

**28.** Install the lower 4-link arm onto the lower axle mount using the factory hardware. Then, install the rear of the lower arm into the drop down bracket using the provided hardware. (pic 26-27)



28.



29.

29. Make sure new 4-link drop down bracket is pushed all the way against the bottom of the frame. Use the bracket as a locator to drill a 1/2" hole. Next, remove the 4-link mount from the frame so that you can drill the hole out to 11/16". (pic 28-29)



30.

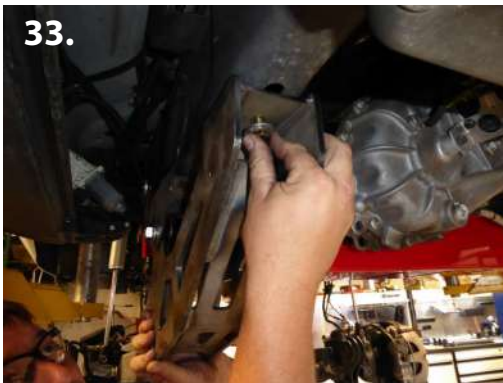


31.



32.

30. Once the hole is drilled out, install the provided rivet nut. Use a rivet nut tool with a 3/4" socket and IMPAC tool to crimp the rivet nut inside the frame. (pic 30-32)



33.



34.

31. Reinstall the 4-link drop down mount to the frame using the provided hardware. Next, reinstall the upper and lower arms. (pic 33-34)  
32. Now repeat this process on the opposite side. Be sure to set the cam bolts the same on both sides when installing. Torque to factory specs. Leave frame sidebolts on arms only snug until you get the vehicle on the ground.

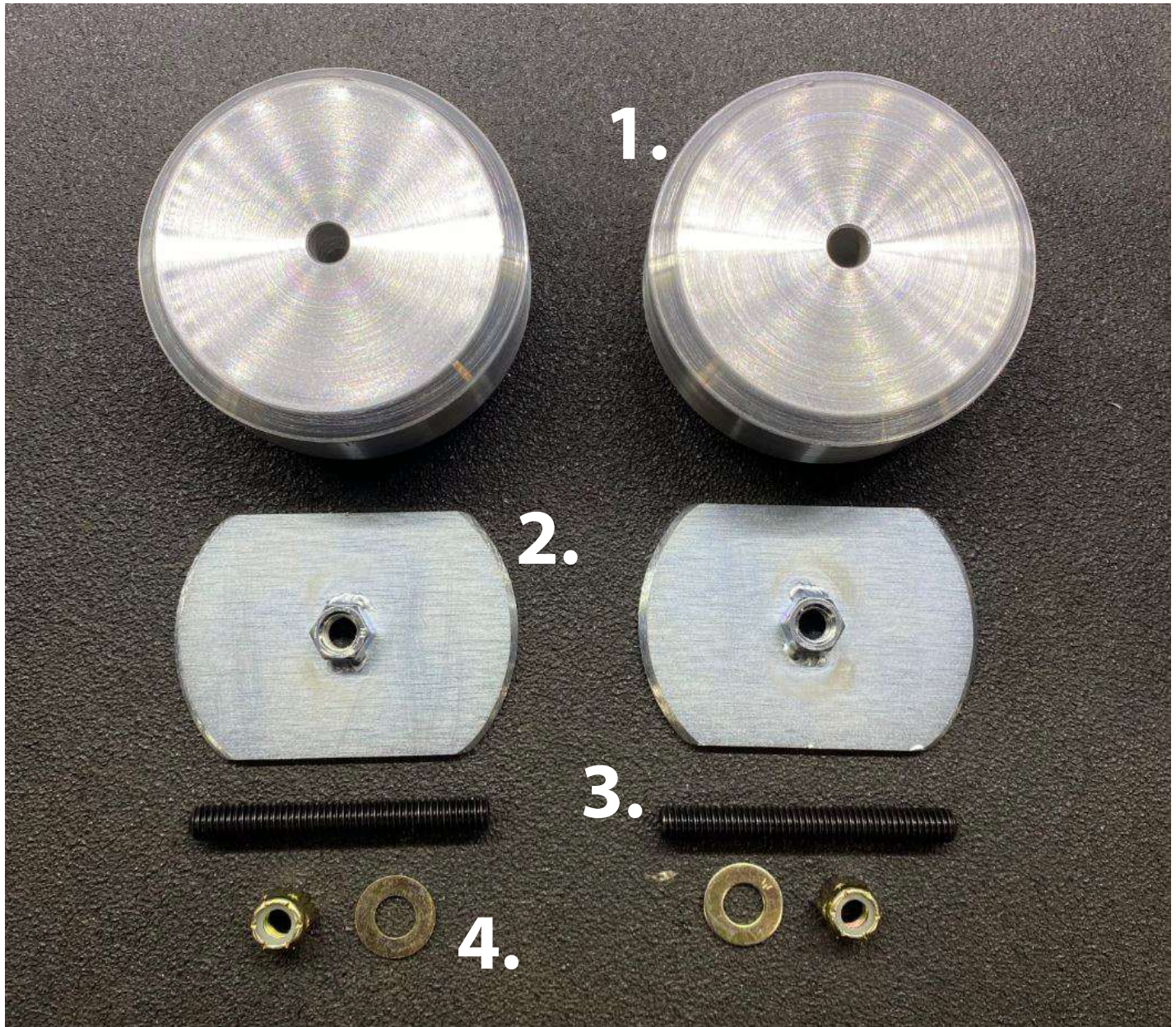


35. FRONT VIEW

33. Track bar alignment cams must be used in the position shown. (pic 35) Place cams in front and back side of track bar drop bracket, so that the bolt will pass through with no obstruction.

34. Install the factory track bar into track bar drop bracket using the supplied 18mm x 90mm hardware. Torque to factory specs.

**\*\*\* Before moving forward, Please refer to coil retainer instructions.\*\*\***



Kit Includes:

1. Coil Retainer Billet Pucks (2)
2. Retainer Backing Plate (2)
3. Retainer Bolt (2)
4. Hardware - Lock Nut (2) / Washer (2)



1. First apply loctite to the supplied retainer bolt. Then screw bolt into the retainer backing plate. Make sure bolt is flush with the top of the welded nut only. Do not screw the bolt past the backing plate.



2. Next, insert the backing plate with bolt into the opening on the factory upper coil mount.



6.



3. With the backing plate installed, slide the supplied billet coil retainer puck in place. Make sure the billet puck slides into place in the opening on the mount. You may need to clean the edges of the opening with a file or sand paper, to be sure a nice tight fit. Then use the supplied washer and lock nut to install. Use an allen wrench and a 9/16" wrench to tighten to 20 ft/lbs.

4. Now re-install the factory coil isolator into the factory location.

5. Repeat these steps for the opposite side of the vehicle.

**Now with the coil retainer pucks installed, you can now install the new provided lift coils.**  
**DO NOT install front coils without having the billet coil retainer pucks installed.**



**35.** Install new lift coils. Be sure to use the factory coil isolators in the factory locations. The tighter winding face up and the more open windings face down. (pic 36-37)

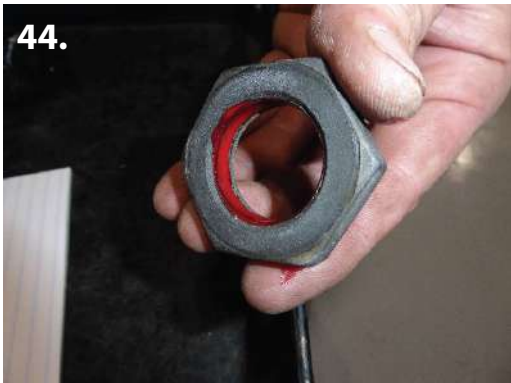
**36.** Install the new shocks into the factory location using the factory hardware on the lower mount and the provided hardware for the upper mount.



**37.** Redirect brake line, so that passenger side brake line bracket faces down instead of to the rear. (pic 38)  
**38.** Install supplied brake line drop brackets on the frame using the factory hardware. Then install the factory brake line bracket to the new drop down bracket using the supplied 5/16" x 3/4" hardware. (pic 39-40)



**39.** Repeat steps 32 and 33 for the driver side brake line bracket. (pic 41-43)  
**40.** Make sure the factory brake line isn't rubbing against anything that could cause failure.



**41.** Before install new drop pitman arm, clean the factory splines and threads so there is no debris or oil. Be sure to clean the threads on the nut as well. Now apply the supplied red thread locker to the factory pitman retention nut and torque to factory specs. Make sure you install it the same way it came off the vehicle. Lining up the four alignment channels. (pic 44-45)  
**42.** Using a 18mm socket, loosen the drag link clamp. (pic 46)



**43.** Loosen and remove drag link adjuster (hex head nut between drag link clamp and tie rod) by turning the nut clockwise while holding the tie rod in place so not to spin. (pic 47)

**44.** Make sure to note where the position of the tie rod is when removed from the drag link. (pic 48)

**45.** Now remove the drag link adjuster from the tie rod. (pic 49)



**46.** Once the drag link adjuster is removed, you must grind down flat the hexagon sides of the tie rod. Grind up to the threads. DO NOT grind any threads. When grinding the end of the tie rod, the goal is to extend the hexagon shaft right to the start of the threads. Making sure it is the same size from one end to the other. Be sure to stop right at the threads. You do not want to grind too much away. (pic 50-51)

**47.** After grinding the tie rod sides flat, reinstall the drag link adjuster on to the tie rod. The tie rod must sit about 1/8" down inside the adjuster. (pic 52)



**48.** Now install the tie rod into the drag link with the tie rod facing up. (pic 53)

**49.** Once installed, tighten the drag link clamp. Torque to factory specs. (pic 54)



**50.** Mount the sway bar drop brackets on the frame in the factory locations. Use the factory hardware. Be sure to mount the brackets so that they are angled away from the axle. (pic 55)

**51.** Attach the factory sway bar to the drop down brackets using the supplied 3/8" x 1-1/4" hardware. (pic 56)

**52.** Now attach the sway bar end link in the factory location using the factory hardware. Torque to factory specs.

**53.** This kit requires a transfer case reclocking ring (included). You will need to remove the original transmission crossmember from the frame. Once you have supported the transmission, one of the bolts on the passenger side cannot be removed because it will hit the exhaust, it must be cut. Remove the nut and push the bolt back through, exposing the head of the bolt. Cut the head of the bolt off and pull it back through the opposite way. (pic 57) We provide you a new replacement bolt to use.

**\*\*\* Before moving forward, Please refer to reclocking ring instructions.\*\*\***



**54.** Install the provided transmission shim before installing the new transmission crossmember. (pic 58)

**55.** Install the new transmission crossmember. Use the remaining three factory bolts and the one new bolt to replace the bolt that had to be cut. (pic 59)

**56.** Install wire loom relocating bracket on the driver side rear of transmission crossmember. Use the factory clip to hold the wire loom in place. The clip will snap into the new loom bracket. (pic 60) Torque all bolts to factory specs.



**57.** Make sure you open the factory clip inside the original driveline before installing it over the factory splines on the transfer case. Once the driveline is pushed all the way into place, the original clip will close locking on to the transfer case splines. Make sure you use the original rubber boot clamp from the transfer case to the driveline. This is to prevent debris from getting inside. (pic 61)

**58.** Apply the supplied thread locking compound to the driveshaft flange retaining bolts. Align the driveshaft flange to the axle flange and thread in the bolts. Torque to factory specs. (pic 62)

## REAR INSTALLATION

With the vehicle turned off and the parking brake set, secure the front wheels/tires with wheel chocks. Use a jack and lift the rear of the vehicle. Place jack stands under the frame on both side of the vehicle. Remove the rear wheels.



1. Support the rear axle and remove the parking brake cable retainer bracket nut. (pic 1)
2. Remove the top shock nut using a 18mm socket.
3. Remove the bottom shock hardware using a 21mm socket and 21mm wrench. (pic 2)
4. Remove the factory shocks from the vehicle. (pic 3)
5. Repeat steps 1 through 4 for the opposite side of the vehicle.



6. Remove the sway bar end link upper mounting hardware. (pic 4)
7. Remove the sway bar end link lower mounting hardware. (pic 5)
8. Remove the sway bar end link from the vehicle.
9. Repeat steps 6 through 8 for the opposite side of the vehicle.
10. Remove the track bar to axle hardware. (pic 6)

**REAR AIR BAG SPACER SHOULD BE INSTALLED BY A CERTIFIED DODGE MECHANIC. SO THEY MAY USE THE ORIGINAL MANUFACTURER'S INSTALLATION INSTRUCTIONS FOR INSTALLING THE AUTOMATIC LEVEL REAR AIR SUSPENSION.**



**11.** This bracket is designed to go between the factory air bag and the factory mount on the axle for the automatic level rear air suspension. The spacer comes with four 3/8" x 1-1/4" bolts with locking nuts to bolt the new spacer to the original air bag mount on the axle. Factory air spring hardware will be used to attach the original air spring to the new air bag spacer. The "opening" on the spacer will be facing the rear of the truck when installing (larger spacer shown in pics). Refer to the manufacturer's installation instructions for installing the factory air bag to the newly installed air bag spacer. (pic 7-9)



**12.** You will need to remove the rubber cups from the factory sensor rods. You will re-use these on the new provided air rods. You can clamp the rod in a vise and use pliers to pull the rubber cups off. DO NOT damage the rubber ends. Once the rubber cups are removed, they will thread directly on to the new provided sensor rods. Thread them on completely until they will not any further. Make sure both rods are the same length when done. Now install the new air rods back on to the factory air sensor mounts. (pic 10-11)

Make sure before you set the truck on the ground. That the top of the factory air spring/bag, locks in to the original bag mount on the frame, and cannot fall out. Also check, to make sure all your lines are clear of any moving parts that could cause any rubbing or failure. Make sure nothing is rubbing against any of the air lines or the factory air bags.

We recommend, when the truck is on the ground and before driving, you lift the outer dust shield that is around the air spring/bag to make sure the air bag is sitting properly. The factory air spring/bag is a sleeve style bag, where the lower portion of the bag will be inside the upper portion. The upper part of the bag will fully surround the lower part and the mount on the bottom of the air bag. Now slide the outer dust shield back in to place.



**13.** Using a 1/2" drill bit, you must open the existing hole in the factory lower track bar mount. (pic 12)

**14.** Install the new track bar bracket into the lower factory mount. Insert the original bolt through the lower hole, going through the factory mount and the new track bar mount. (pic 13)



14.



15.

15. Install the new track bar bracket brace. This brace mounts to the new track bar bracket (front side near the coil mount). Use the provided 9/16" bolt to install this brace and factory track bar. The bolt will go through the new track bar bracket, factory track bar, and new track bar bracket brace.

16. The track bar bracket brace will sit on top of the mounting tab of the new airbag spacer. Use the provided 3/8" x 1-3/4" hardware. This bolt will go through the new track bar bracket brace, the new airbag spacer, the original airbag pad, and the new track bar bracket.

17. The new track bar bracket brace requires two holes to be drilled. Using the brace as a guide, drill the hole on the side facing outwards to 1/2" and install the provided 1/2" x 1-1/2" bolt. (pic 14) Next, drill the front hole facing inward to 3/8" and install the 3/8" x 1-1/2" bolt. (pic 15)

18. Lastly use the provided 1/2" x 1-1/2" bolt through the hole you drilled out previously (step 13) to mount the track bar bracket. Now go through and tighten all bolts for the track bar bracket and brace.



16.



17.



18.



19.

19. Remove the factory bump stops on both sides using a 15mm socket.

20. Install the new rear bump stop extension to the frame on both sides using the factory hardware.

21. Mount the factory bump stops to the bump stop extensions using the provided 3/8" x 1-1/4" hardware. (pic 16)

22. Install the new sway bar end links using the supplied 1/2" x 2-1/2" hardware. Be sure to use the large size washer on the outside and the smaller size on the inside. (pic 17)

23. Install the new rear lift shocks using the factory hardware. Be sure to have the shock body down. (pic 18)

24. Install the provided rear brake line bracket onto the rear end in the factory location. Use the provide hardware to install the factory brake line bracket to the new brake line extension. (pic 19)

25. You may now set the vehicle on the ground. If you have not already, be sure to tighten the rear track bar bolts.

**Double check all the front and rear fasteners and components, making sure everything has been torqued to the proper specifications. This MUST be done prior to operating the vehicle. Be sure to get the vehicle properly aligned immediately. We recommend periodically checking all components front and rear to be sure they are all in proper working order.**

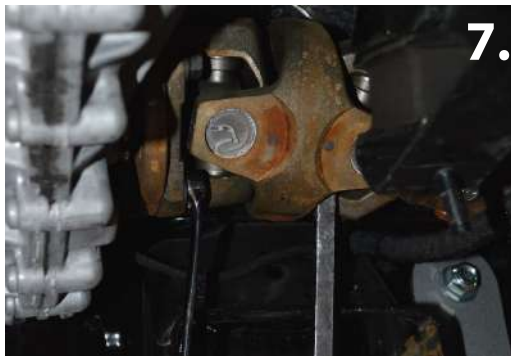
**DODGE RAM RE-CLOCKING RING INSTRUCTIONS**  
**2014+ 2500 / 2013+ 3500 (for 6", 8", & 10")**



1. Place a jack under the transmission pan.
2. Using a 15mm socket, remove the three nuts that hold transmission mount to crossmember. (pic 1)
3. Use a 15mm socket to remove the bolts that hold the driveline to the rear differential. (pic 2)
4. Remove rear driveline from the transfer case. Place a rag under the output shaft so any light oil can be captured. (pic 3)



5. Remove the eight Christmas tree clips on the wire that routes along the transmission crossmember. (pic 4)
6. Remove the 4 bolts that hold the transmission crossmember to the frame, using a metric 24 socket and wrench. (pic 5)
7. Remove the transmission crossmember from the vehicle. (pic 6)



7.



8.



9.

**8.** Remove the front drive line bolts from the transfer case using a 5/8" wrench. Remove the drive line from the vehicle using a 15mm socket. (pic 7)

**9.** Remove the rubber transmission mount from the transmission using a metric 15 socket. (pic 8)

**10.** Unplug the electrical connector on the transfer case. (pic 9)



10.



11.



12.

**11.** Remove the 3 Christmas tree clamps that hold the wire to the transfer case. (pic 10) And disconnect the vent tube using pliers.

**12.** Using a metric 14 wrench, remove the six nuts that hold the transfer case to the transmission. (pic 11)

**13.** Using an inverted torque, remove the factory studs from the transmission case and discard. You can use pliers if you do not have an inverted torque. (pic 12)



13.



14.



15.

**14.** Take the index ring and locate the position where the bolt pattern matches up to the transfer case. (pic 13)

**15.** Using the provided metric 10-1.5 x 25mm SNCS bolts, tighten the ring to the transfer case. Apply a small amount of loctite to the bolts and tighten using a 8mm allen wrench. (pic 14)

**16.** Install the supplied 3/8"-24 x 2" S.S. screw using a 3/16" allen wrench. Apply a small amount of loctite to each screw. Be sure to only screw in until it touches, then put a small amount of pressure to tighten.

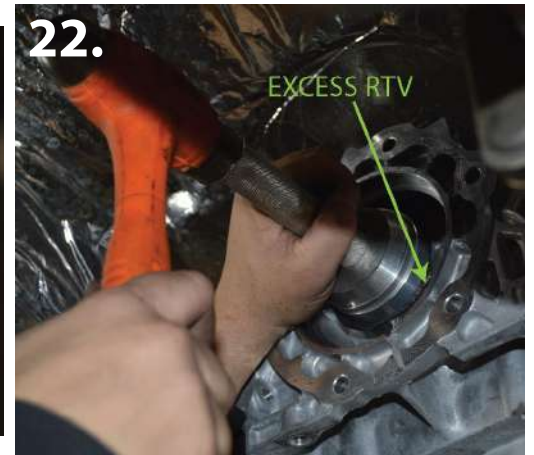


NOTE: Picture 16 shows in the **recommended** 20 degree position. You will need to install the McGaughy's transmission crossmember in this position. Picture 17 shows the 10 degree position, which can run the factory crossmember with trimming.



**17.** Remove the output shaft seal on the transmission and discard the factory seal. (pic 18)

**18.** Using a bearing race and seal driver, install the oil seal into the seal adaptor. (pic 19)



**19.** After the seal is installed, apply a small amount of RVT silicon to the seal adaptor. (pic 20) Also, apply a small amount of grease to the seal. (pic 21)

**20.** Tap the seal adaptor into the transmission where the factory seal was, using a bearing race and seal driver. Remove any excess RTV silicon. (pic 22)

**BE SURE TO LET SILICON SET FOR 24 HOURS BEFORE DRIVING**



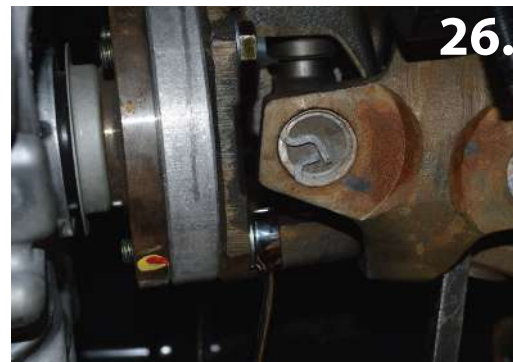
**21.** Reinstall the transmission case to the transmission, using a 9/16" wrench and socket. Torque to factory specs. (pic 23)

**22.** Reconnect the vent tube to the vent port. Reinstall the electrical connector with the three Christmas tree clamps.

**23.** Reinstall the rubber transmission mount. Torque to factory specs. (pic 24)

**24.** Reinstall the front drive line. (pic 25)

**25.** If your kit came with a drive line spacer, install it now using the supplied 7/16" x 2" bolts. Use a small amount of loctite and a 5/8" wrench. (pic 26)



**26.** Install the McGaughy's crossmember with the large cut out on the driver side, using the factory hardware and a metric 24 wrench. (pic 27)

**27.** Reinstall the Christmas tree clamps using the holes provided in the crossmember.

**28.** Remove the clip that holds the electrical harness to the frame. (pic 28)

**29.** Make sure the wiring harness does not interfere with the drive line. (pic 29)

**30.** Now tighten the rubber transmission mount to the transmission crossmember using a metric 15 socket.