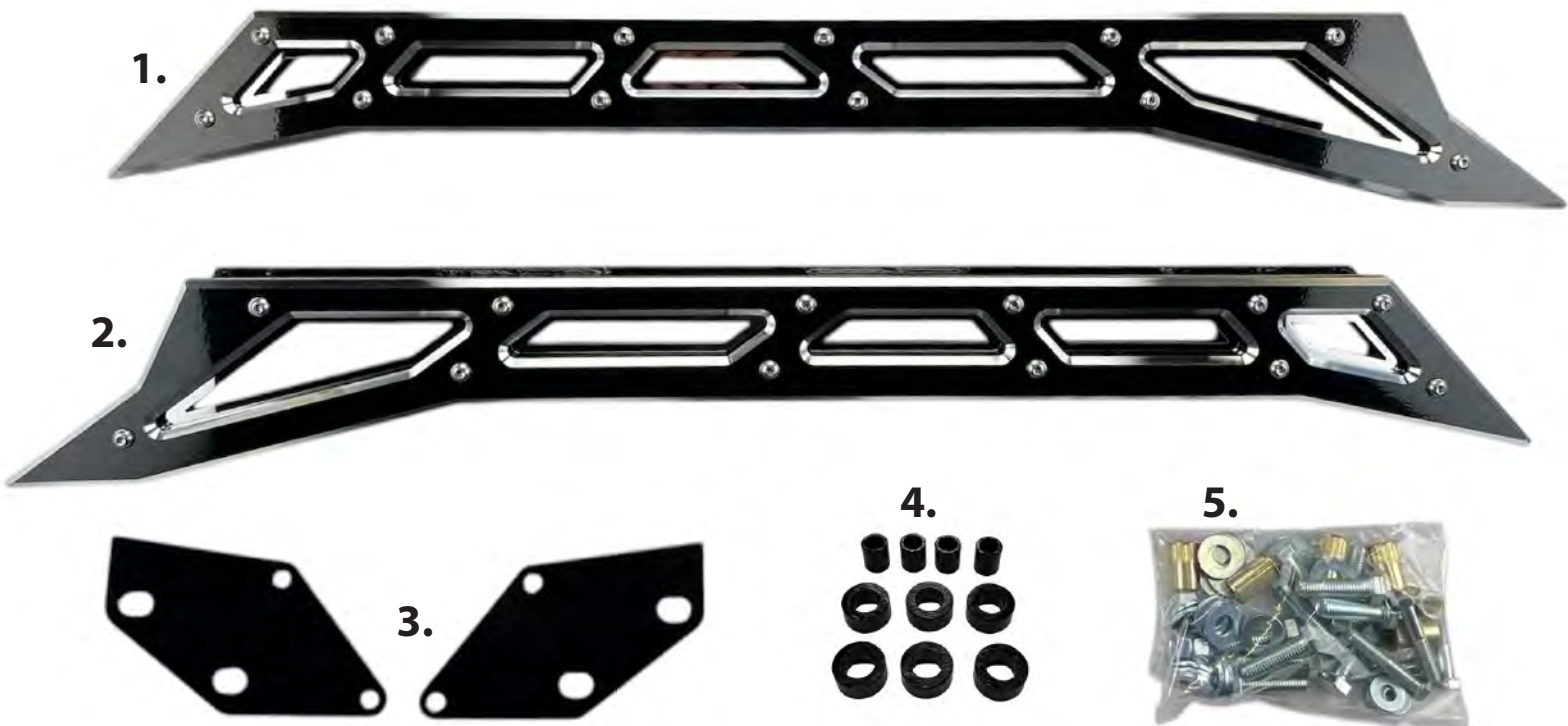


**2023+ FORD F250 / F350
CRADLE KIT
PART# 57402**

* Fits Short Bed Trucks ONLY



- 1. Passenger Side Cradle Bracket
w/ Stainless Steel Inserts & Billet Face Plates**
- 2. Driver Side Cradle Bracket
w/ Stainless Steel Inserts & Billet Face Plates**
- 3. Cradle Attachment Brackets (2)**
- 4. Cradle Bracket Spacers (4-Small / 6-Large)**
- 5. Hardware Pack**

**READ THESE ENTIRE INSTRUCTIONS
BEFORE STARTING ANYTHING**

- If you are the installer only, and not the owner of the vehicle, please make sure the owner of the vehicle gets these instructions. They contain very important information about the lift kit, maintenance, and warranty.
- Before moving forward with installation, please layout all parts from boxes and ensure everything is present. If any parts are missing, please contact McGaughy's Suspension immediately at 559-226-8196.
- If you alter the finish of any of the provided components, like zinc plating, chroming, or powder-coating, which can cause damage to the strength and structure of the metal, any warranties will be null and void.
- If any components are ground on or modified in any way, then no returns or exchanges will be accepted and any warranties will be null and void.
- NO welding is required to install any part of this lift kit. Do not weld any components.
- Over-sized tires and heavier wheels can cause premature wear on factory and aftermarket components like ball joints, bushings, tie-rod ends, wheel bearings, idler arms, drive-lines, etc.... You may need to replace / install new components sooner than factory recommendations based on the tires and wheels you choose. Please note that the heavier and wider wheels and tires combined with aggressive driving (off-road and on highways) will cause more wear on ALL moving parts, factory and aftermarket. Especially when vehicle is in 4wd or Auto-4wd / AWD modes.

WARRANTY INFORMATION

- McGaughy's warrants all **McGaughy's** products against manufacturer's defects in materials or workmanship for a period of **ONE-YEAR** from the date of original purchase. All McGaughy's spindles carry a **LIFETIME** warranty against manufacturer's defects.
- Warranty will not extend to any product or part there in, that has been improperly installed, abused, or neglected.
- McGaughy's will not warranty any product(s) that were modified in any way. Check fit all products prior to custom painting, powder-coating, or any form of fabrication (sanding, drilling, painting, chroming, etc).
- There are **NO WARRANTIES** neither expressed nor implied for powder-coating on any McGaughy's products.
- McGaughy's is not responsible for damages and/or warranty of other vehicle parts (factory or aftermarket) related or non-related to the install of McGaughy's component(s).
- Warranty is limited to the repair or replacement (of McGaughy's product only), at McGaughy's discretion. And only after inspection of the defective part, once returned to McGaughy's with proof of purchase, date of purchase, and all shipping costs prepaid.
- Any cost of labor, freight, incidental or consequential damages are expressly excluded from warranty.



DRIVER SIDE (MOCKED UP)

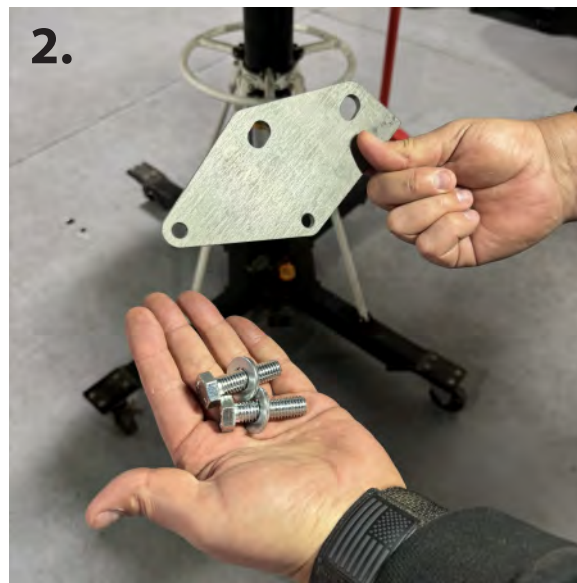
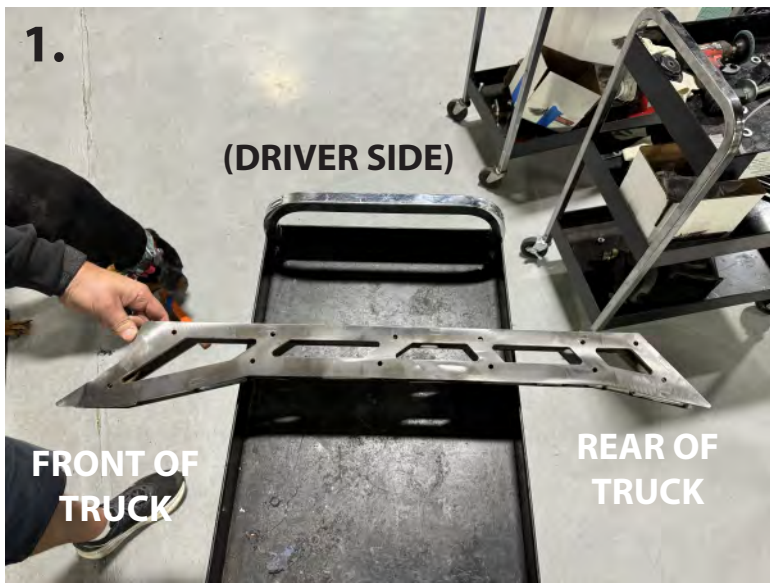


PASSENGER SIDE (FINISHED)



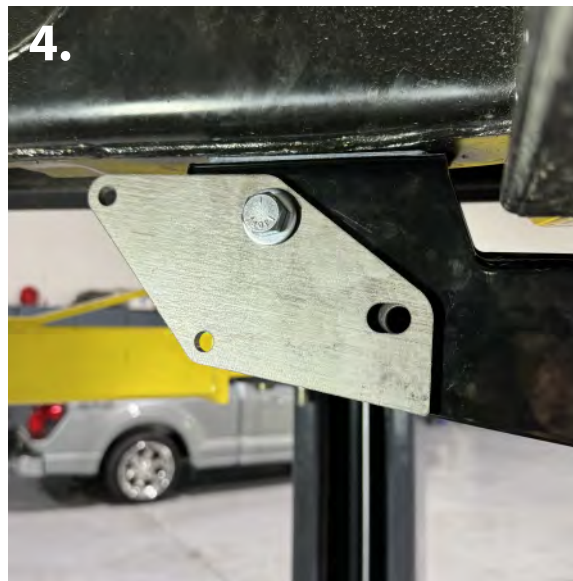
DRIVER SIDE (FINISHED)

***Instructions are shown using a RAW cradle kit for installation purposes only. Cradle kits are sold powder coated, with S/S inserts & billet face plates installed. Unless specifically order in RAW.**

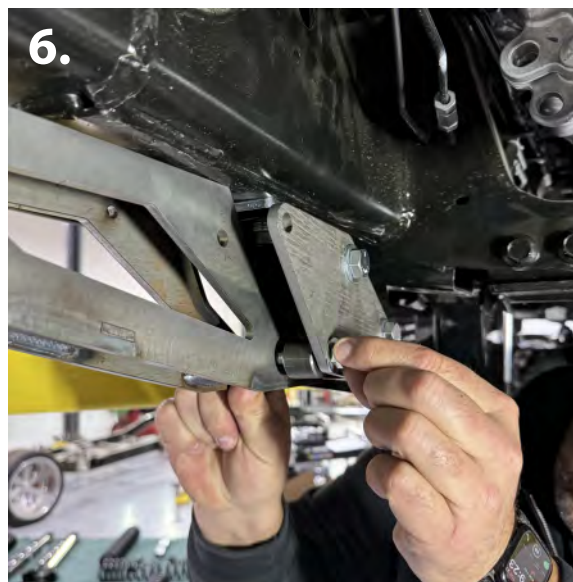


1. The cradle has a larger end and a smaller end. The larger end goes towards the front of the vehicle. (pic 1)

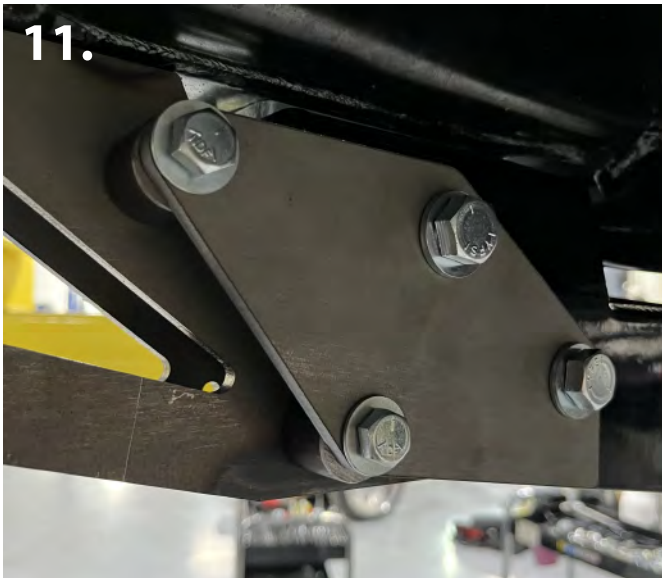
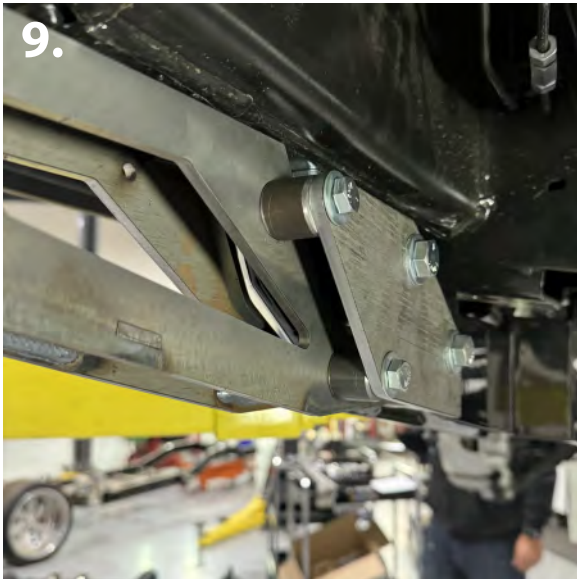
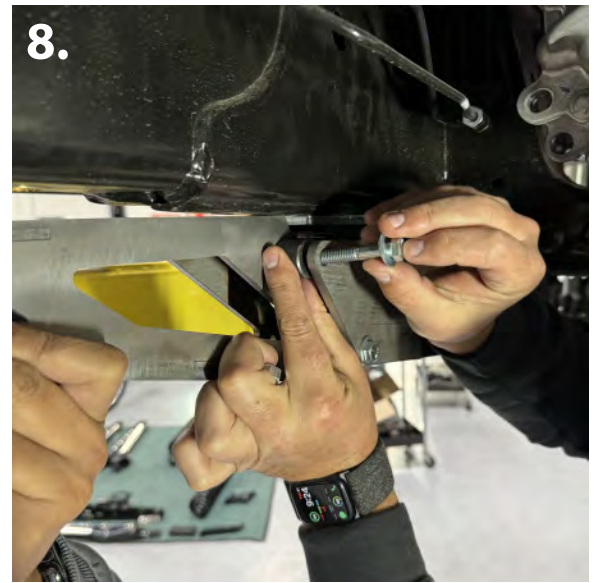
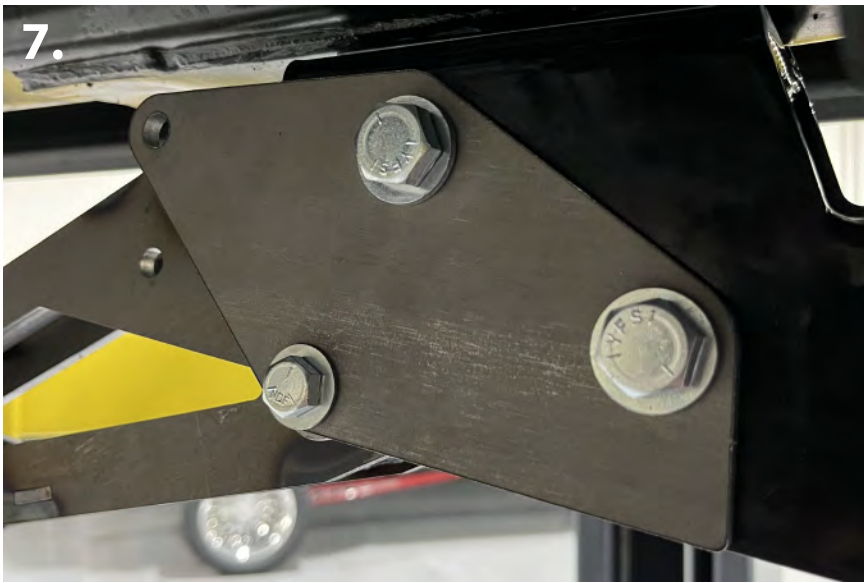
2. Using the provided mounting bracket, bolt the bracket to the existing holes on the 4-link drop down bracket. Use the provided 1/2" x 1-3/4" bolts, washers, and nuts. Be sure to snug the hardware only. (pic 2-3)



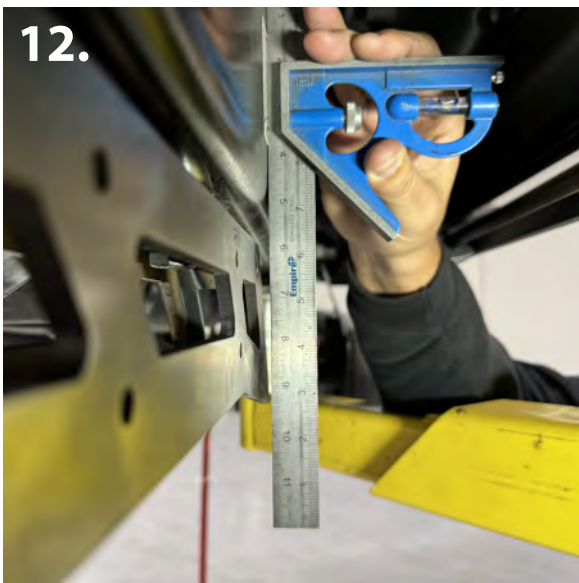
3. The holes on the bracket are slotted. Make sure you shift/slide the bracket all the way towards the rear of the truck. (pic 4)
*Do not tighten yet.



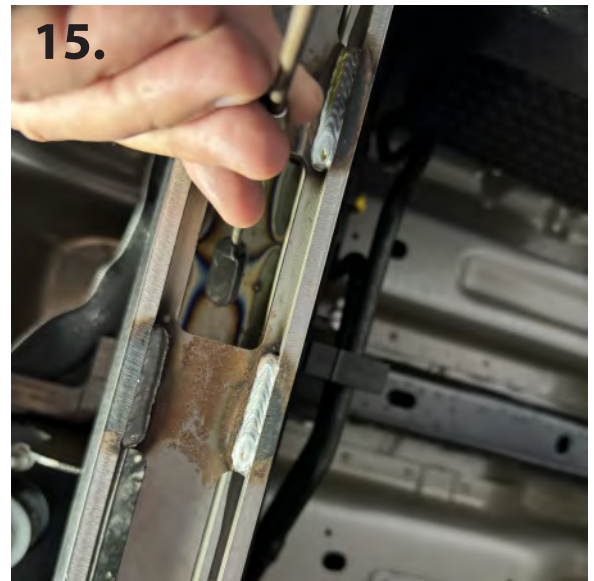
4. With the bracket snug and slid towards the rear of the truck, hold the cradle up and bolt it on to the installed bracket. Use the provided 3/8" x 2" bolts, washers, and nuts. You will also use the provided .875" spacers between the cradle and bracket. Snug the hardware only. (pic 5-11)
*Holding the cradle in place may require two people.



5. Now, with the cradle bolted to the 4-link drop bracket, push/hold the cradle up in position on the frame where it will sit. Use the provided .600" spacers between the frame and cradle. Position the the spacers so they do not block the mounting holes on the top of the cradle that you are needing to mark. With the spacer(s) in place to hold the cradle away from the frame, make sure the outside face of the frame and the outside face of cradle have a gap and are not even or flush. (pic 12-13)



6. With the cradle held in place, mark/scribe the three slotted holes on the bottom of the frame. (pic 13-16)



7. Once the slotted holes have been marked, you can remove the cradle from the vehicle. Make sure you center punch the very center of the marked slot. This will allow some adjustment the cradle (front to back) once it is installed. Once center punched, you will drill out the three holes on the bottom of the frame. Drill each hole to 11/16" (pic 17)



18.



19.



20.



21.

8. With the holes drilled, you can now install the rivet nuts using a rivet nut tool. (pic 18-19)

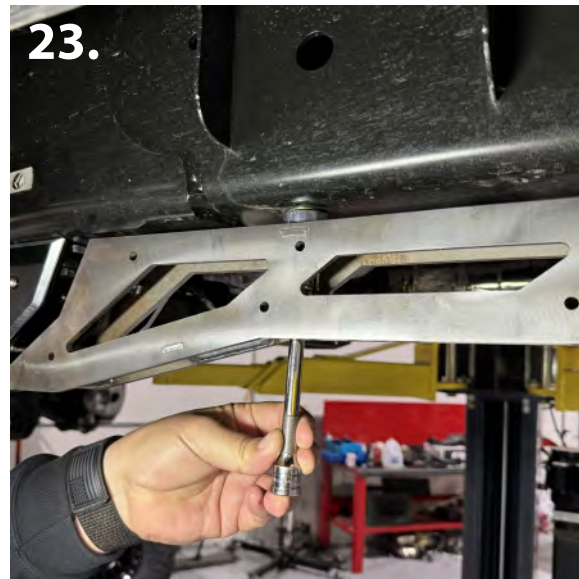
9. Once the rivet nuts are installed on the bottom of the frame, you can now re-install the cradle. First, bolt up the cradle to the 4-link drop down bracket. Be sure to use the .875" spacers. Leave bolts snug. (Reference steps 2-4 if needed)

10. Now, slide/insert the three .600" spacers between the cradle and the bottom of the frame. (pic 20-21)

22.



23.



24.



11. With the spacers in place over the slotted holes on the cradle, use the provided 1/2" x 1-3/4" bolts and washers to install. Snug the bolts only. (pic 22-23)

12. You can now adjust the cradle if need be. You can fine tune the gap between the cradle and 4-link. And also between the cradle and traction bars if you have them. If this is the last time you need to install the cradle, meaning it is powder coated and all billet/SS inserts are installed, then you can proceed to torque down all the bolts.

13. Start at the front, torque the two 1/2" x 1-3/4" bolts on the 4-link drop down bracket to 70 ft lbs. Then, torque the two 3/8" x 2" bolts (w/.875" spacers) to the cradle, to 35 ft lbs. Last, torque the three 1/2" x 1-3/4" bolts (w/.600" spacers) on the cradle into the rivet nuts on the bottom of the frame, to 70 ft lbs.

The cradle is now installed. Be sure to go over all the hardware and re-torque after 500 miles.

If you ordered a RAW cradle kit or had your parts custom painted or powder coated. You must install / re-install the Stainless Steel Inserts & Billet Face Plates prior to installation of the cradle on the vehicle. The next two pages will walk you through that process.

NOTE: On final install of stainless steel inserts and billet face plates, make sure you use loctite on all the button head bolts.

25.



26.

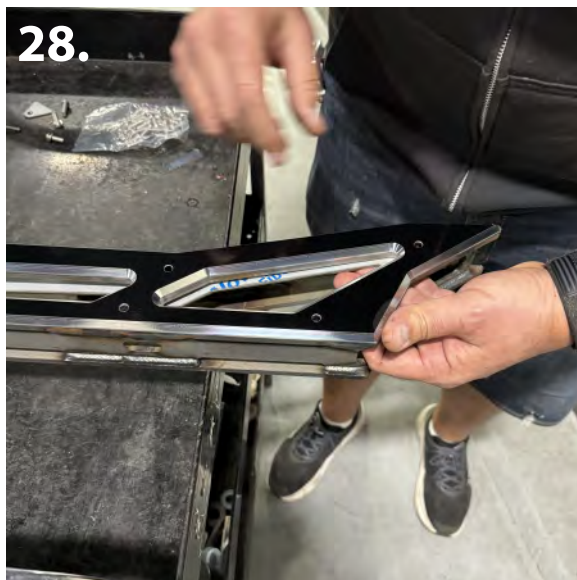


14. If you ordered your kit RAW, then you will need to install the stainless steel inserts and billet face plates, once it is powder coated or painted. Make sure all the parts are there and accounted for before you have anything powder coated. (pic 25)

27.



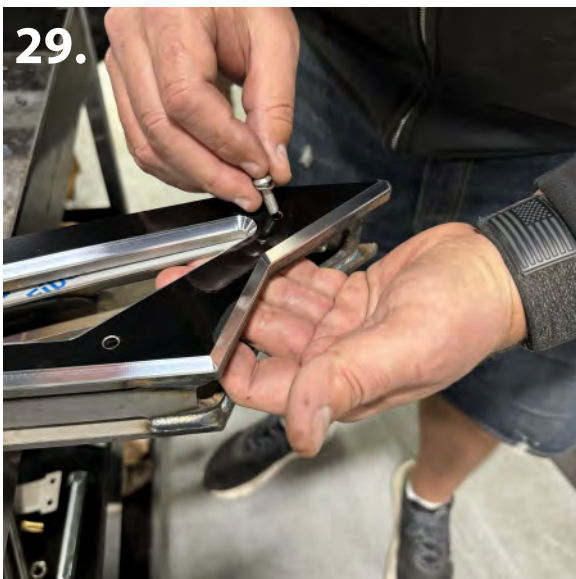
28.



15. The stainless steel inserts will have a protective film on the face side. You will remove the film before installing. Once removed, slide the S/S insert into the cradle on the larger opening side. (pic 26-27)

16. With the S/S insert inside the cradle and the holes lined up, lay the billet face plate on the cradle and line up those holes as well. (pic 28)

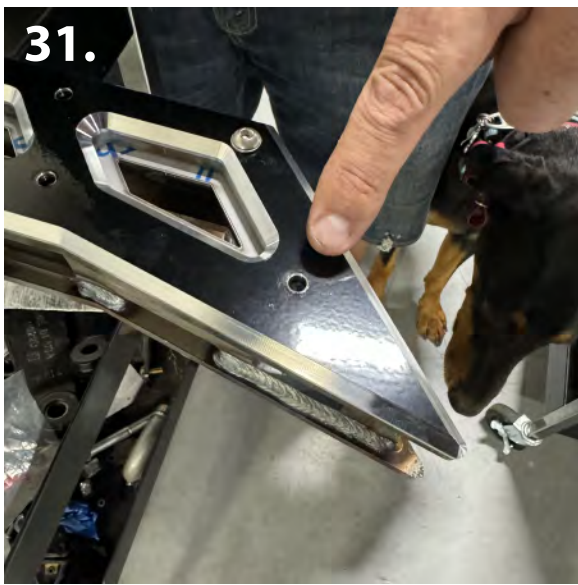
29.



30.



17. The S/S insert is threaded, so the bolts will thread directly into it. Start on the side you slid the S/S insert into. Install the button head bolt on the two outside holes first. Do not tighten yet. (pic 30) Next, install the bolt on the opposite side, to hold the S/S insert in place. Do not tighten yet.

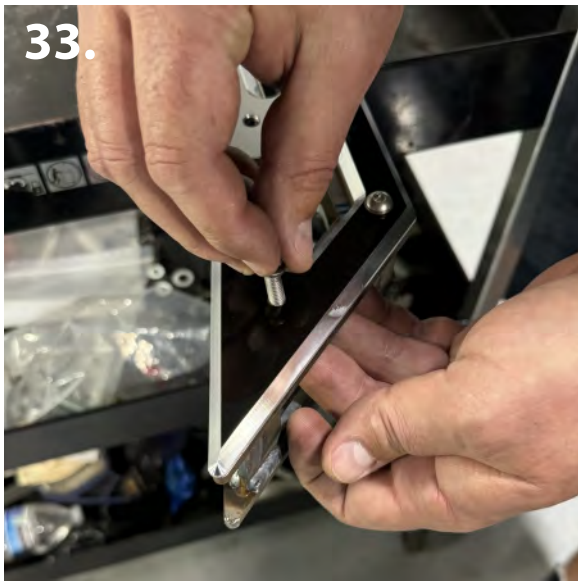


31.



32.

18. With the one bolt installed to hold the S/S insert, you will notice that the last hole on the cradle does not have a spot on the S/S insert that is threaded. (pic 31)



33.



34.

19. We provided you a small threaded triangle piece that will fit inside in the corner of the cradle. This will sandwich the S/S insert and hold it in place. Line up the hole on the triangle piece and the hole on the cradle. Install the button head bolt. (pic 32-33)



35.

20. You can now proceed to install all the button head bolts. Snug them all first. Once all the bolts are installed, you can then tighten them one by one. (pic 34-35) Now the cradle is ready to be installed on the truck.

NOTE: On final install of stainless steel inserts and billet face plates, make sure you use loctite on all the button head bolts.