



McGAUGHYS
S U S P E N S I O N P A R T S

4603 E. VINE AVE.
FRESNO, CA 93625
559-226-8196

PART # 70040

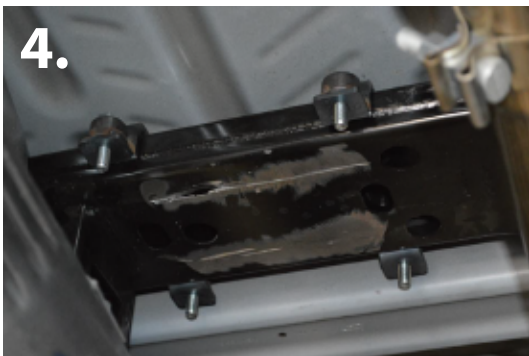
2015-17 FORD F-150 CARRIER BEARING KIT



1. Remove the factory carrier bearing from the frame mount. Cut the OEM carrier mount off the frame using a cut-off disc. (pic 1)
2. After cutting, flatten the area down with a grinding disc. (pic 2)
3. Be sure to paint the bare metal to avoid any rust.



4. Slip the upper bracket in between the body of the truck and the carrier crossmember. Slide over to where the original carrier was mounted and align with the large hole in the frame. (pic 3)



5. Insert 3/8" bolts in the downward position through the upper brackets. (pic 4)



6. Place the angled brackets with the welded nuts going into the factory frame opening. Tighten the 3/8" bolts and nuts. (pic 5)



7. Bolt the carrier bearing into place with the bolts going into the nuts on the angled bracket using the provided 3/8" hardware. (pic 6)