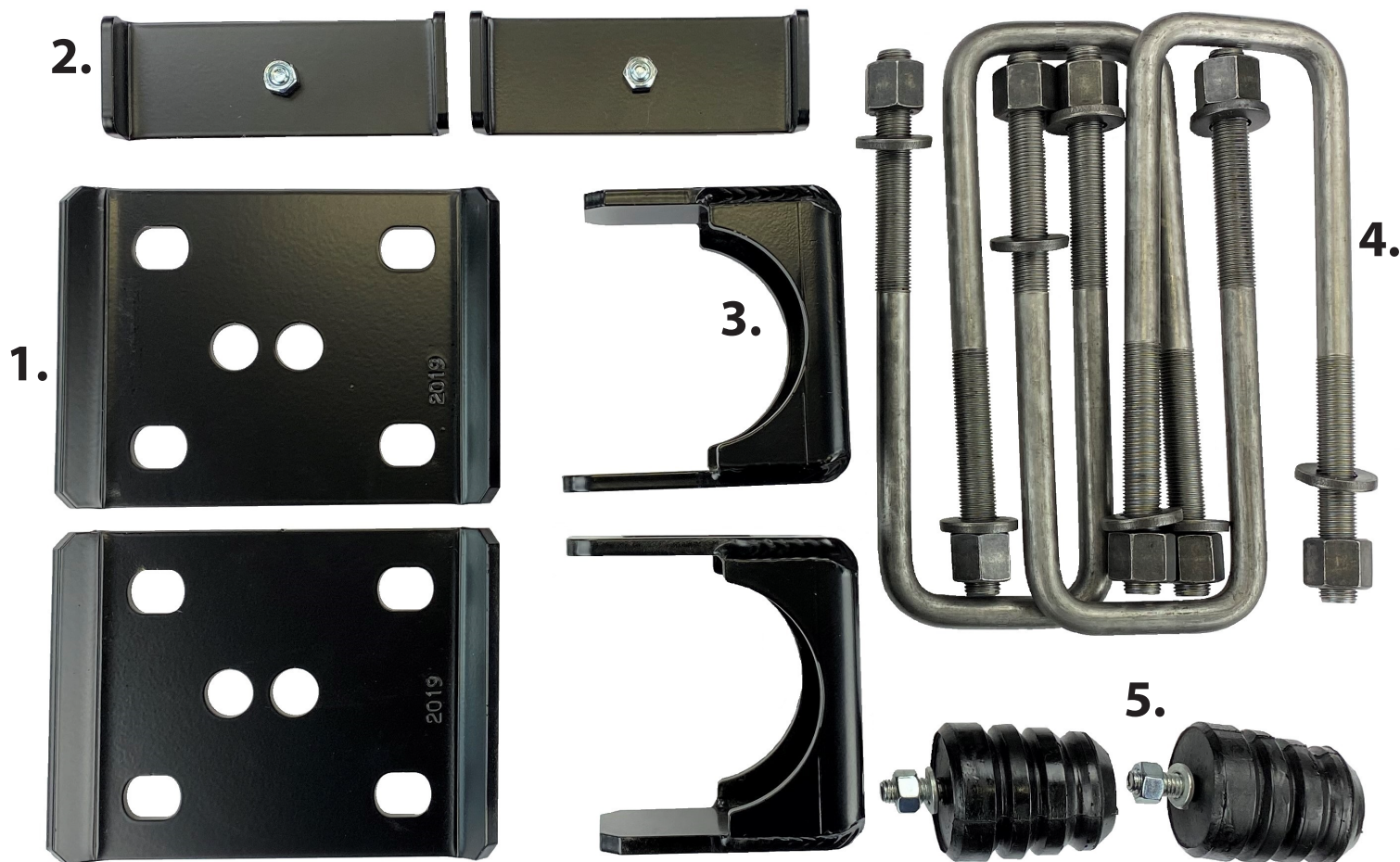


1. U-Bolt Plates (2)
2. U-Bolt Retainer Plates (2)
3. Flip Kit Saddles (2)
4. U-Bolts (4)
5. Bump Stops (2)



**McGAUGHY'S**  
S U S P E N S I O N P A R T S

**PART # 34347**  
**REAR FLIP KIT FOR 2019-22 GM 1500**



- If you are the installer only, and not the owner of the vehicle, please make sure the owner of the vehicle gets these instructions. They contain very important information about the kit, maintenance, and warranty.
- Before moving forward with installation, please layout all parts from boxes and ensure everything is present. If any parts are missing, please contact McGaughy's Suspension immediately at 559-226-8196.
- If you alter the finish of any of the provided components, like zinc plating, chroming, or powder-coating, which can cause damage to the strength and structure of the metal, any warranties will be null and void.
- If any components are ground on or modified in any way, then no returns or exchanges will be accepted and any warranties will be null and void.
- NO welding is required to install any part of this lift kit. Do not weld any components.
- U-bolts are shipped with protective coating on surface. This allows them to be delivered to you without rust. We recommend you clean and paint the parts before you install, to protect against any future rust. Remember, u-bolts are bare metal, and will rust without paint.



**McGAUGHY'S**  
S U S P E N S I O N P A R T S

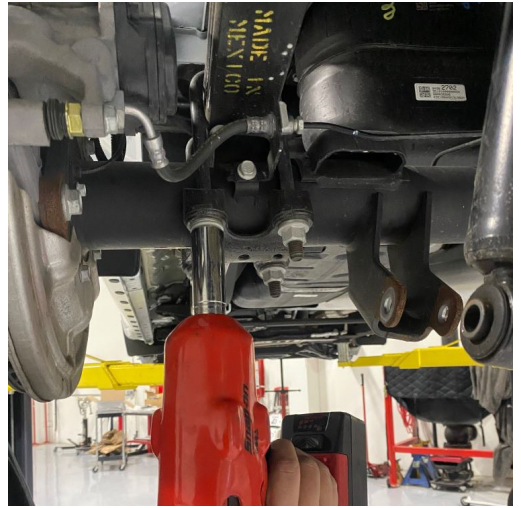
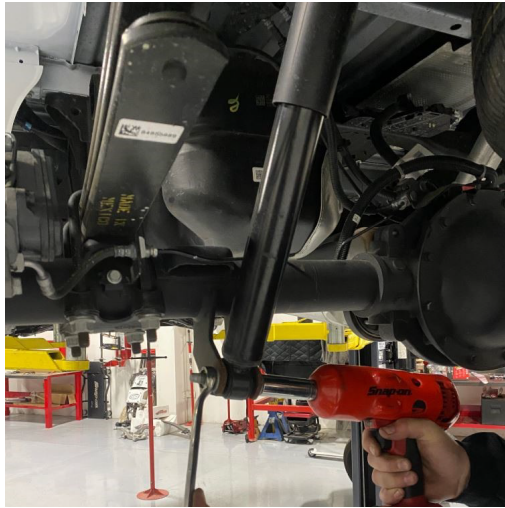
559-226-8196  
4603 E. VINE AVE.  
FRESNO, CA 93725  
[www.mcgaughys.com](http://www.mcgaughys.com)

## WARRANTY INFORMATION

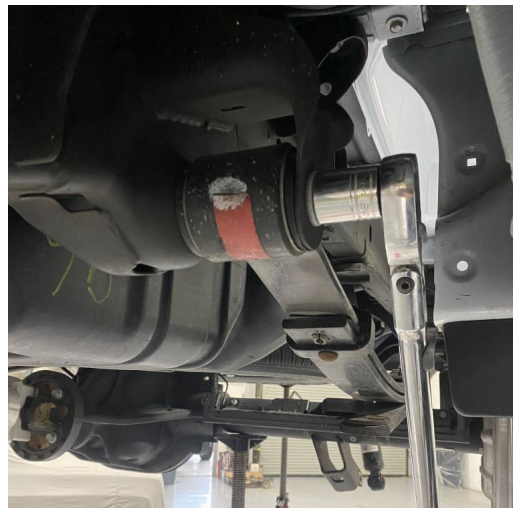
- McGaughy's warrants all **McGaughy's** products against manufacturer's defects in materials or workmanship for a period of **ONE-YEAR** from the date of original purchase. All McGaughy's spindles carry a **LIFETIME** warranty against manufacturer's defects.
- Warranty will not extend to any product or part there in, that has been improperly installed, abused, or neglected
- McGaughy's will not warranty any product(s) that were modified in any way. Check fit all products prior to custom painting, powder-coating, or any form of fabrication (sanding, drilling, painting, chroming, etc).
- There are **NO WARRANTIES** neither expressed nor implied for powder-coating on any McGaughy's products.
- McGaughy's is not responsible for damages and/or warranty of other vehicle parts (factory or aftermarket) related or non-related to the install of McGaughy's component(s).
- Warranty is limited to the repair or replacement (of McGaughy's product only), at McGaughy's discretion. And only after inspection of the defective part, once returned to McGaughy's with proof of purchase, date of purchase, and all shipping costs prepaid.
- Any cost of labor, freight, incidental or consequential damages are expressly excluded from warranty.



Always use the proper tools and consult the factory service manual for torque values and procedures. With the vehicle turned off and the parking brake set, secure the front wheels/tires with wheel chocks. Use a jack and lift the rear of the vehicle. Place jack stands under the frame on both side of the vehicle. Remove the rear wheels.



1. With the vehicle properly supported, make sure to secure the rear end with jack stand or a proper rear end support.
2. Start by removing the factory rear bump stops. Next, disconnect the factory rear shocks from the lower mounts on the rear end. Then, remove the factory u-bolts from the truck.

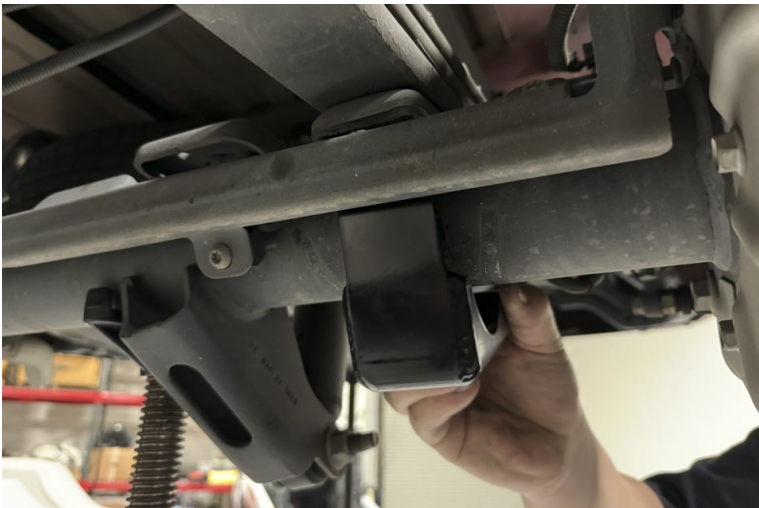
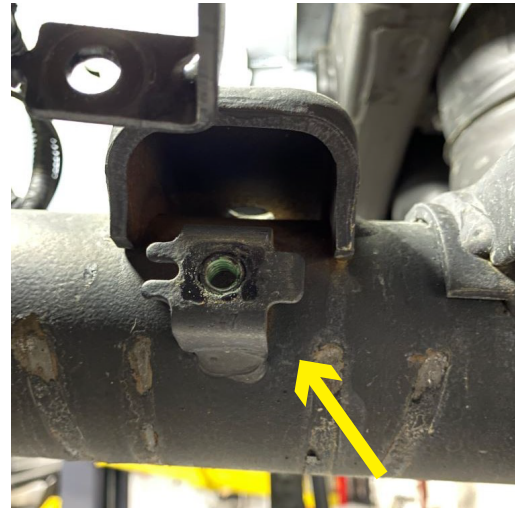
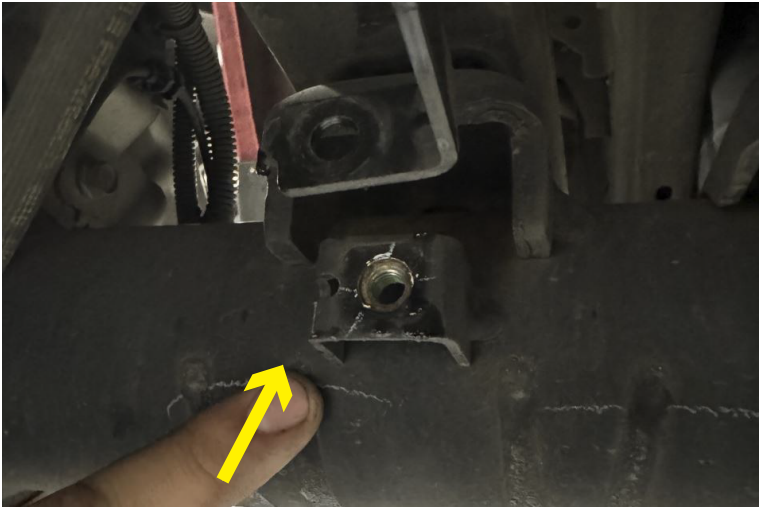


3. Loosen the leaf spring bolt on the shackle side, and remove the bolts that connect the leaf spring to the hangers.
4. Now remove the leaf spring pack from the vehicle. Next, clamp the leaf pack together and remove the factory center pin. With the pin removed, take off the factory u-bolt retainer and re-install the factory center pin.

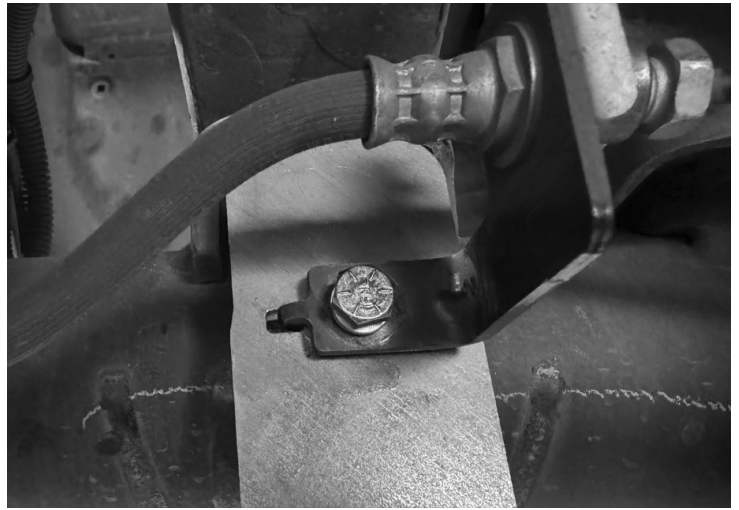




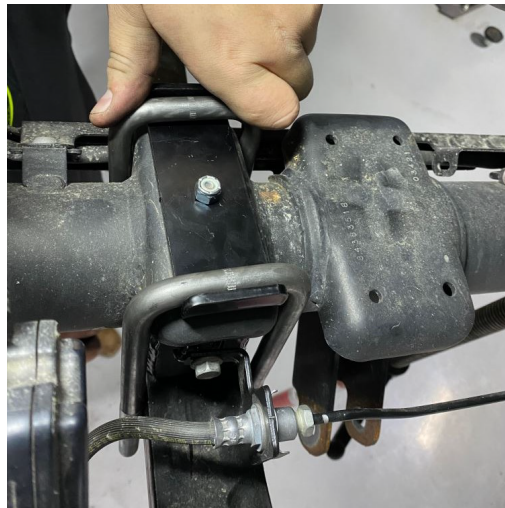
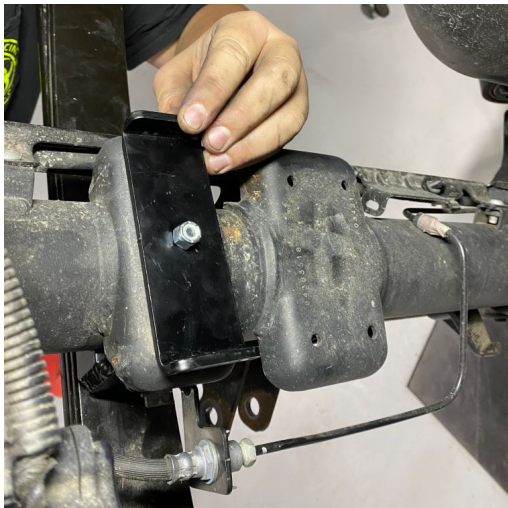
5. To install the flip kit on the rear end, you will need to remove the factory brake line bracket on the driver side and the passenger side. Now, with the bracket removed, you will cut off the the factory mount on the axle. Your mount will look like either of the pics below. Be sure to remove the whole factory mount and smooth any high spots with a grinder. DO NOT cut into your rear axle. Once the factory mount is removed and cleaned up, slide the flip saddle into place.







6. The flip kit saddle will have a tapped hole for you to re-install you factory bracke line bracket. Be sure to have the factory bracket completely secure using the locator holes and bolt down the factory bracket to the flip kit using the new provided bolt and washer.





7. Use the provided u-bolt retainer plate on top of the rear end. Then install the provided u-bolts and bottom u-bolt plate on the leaf springs. Make sure the leaf spring center pin is installed through the front hole (furthest hole towards the front of the vehicle).

8. Be sure to re-connect the leaf spring and shackle into the rear hanger of the vehicle as well.

9. Re-install the factory shocks using the factory hardware. Torque to factory specs.

10. Re-install the factory brake line bracket into the factory location using the factory hardware. Torque to factory specs.

11. Install the new provided bump stops into the factory location, using the provided hardware.

12. Now go over and tighten all the leaf spring hardware at the front hanger and the rear hanger. Torque to factory specs. Torque u-bolts to

**\* Double check all of the fasteners and components, making sure everything has been torqued to the proper specifications. This MUST be done before operating the vehicle.**

**\* After 500 miles, be sure to go over all of the suspension to make sure nothing has come loose and everything is still tight.**

**\* We recommend periodically checking all of the front and rear suspension and lift components to be sure they are tight and in proper working order.**